

LEVEL	QUANTITY*	QUANTITY
BASEMENT	520 SF	-
FIRST FLOOR	520 SF	1,840 SF
SECOND FLOOR	520 SF	2180 SF

* QUANTITIES REPRESENT CONTAMINATED FLOOR SPACE. CONTRACTOR IS RESPONSIBLE FOR ALL GENERATED ASBESTOS WASTE.

ASBESTOS

1

THE CONTRACTOR SHALL REMOVE ALL ASBESTOS CONTAMINATED MATERIALS INCLUDING CEILING STUDS, CEILING STUDS, BATHROOM FIXTURES, FLOOR TREADS AND

2

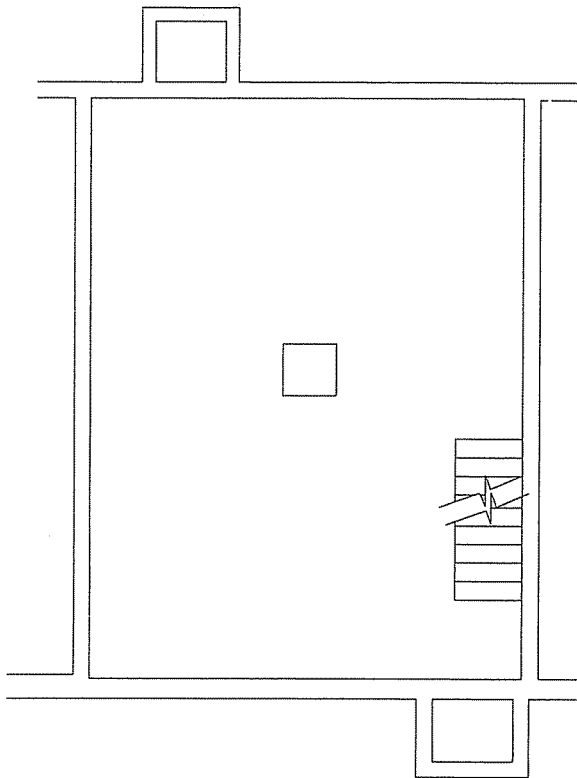
THE BASEMENT SHALL BE CONTAINED BY A LICENSED CONTRACTOR. PART OF THE BASEMENT SHALL BE REMOVED BY

3

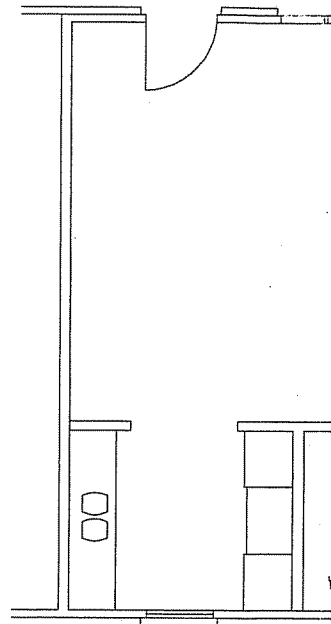
THE CONTRACTOR SHALL REMOVE ALL LAMINATE FLOORING FROM THE FIRST FLOOR

4

THE CONTRACTOR SHALL REMOVE ALL REMAINING ASBESTOS FROM THE SECOND FLOOR. THE SECOND FLOOR SHALL BE PROTECTED



BASEMENT PLAN 1 2



FIRST FLOOR

J:\14-087-034\14-Rochester Housing Authority\82 Merrimac\CAD\Merrimac Asbestos Plans.dwg 4/14/2016 10:52 AM

WARNING

IT IS A VIOLATION OF SECTION 7209, SUBDIVISION 2, OF THE NEW YORK STATE EDUCATION LAW FOR ANY PERSON, OTHER THAN THOSE WHOSE SEAL APPEARS ON THIS DRAWING, TO ALTER IN ANY WAY AN ITEM ON THIS DRAWING. IF AN ITEM IS ALTERED, THE ALTERING ENGINEER SHALL AFFIX TO THE ITEM HIS SEAL AND THE NOTATION "ALTERED BY" FOLLOWED BY HIS SIGNATURE AND THE DATE OF SUCH ALTERATION, AND A SPECIFIC DESCRIPTION OF THE ALTERATION.

NO.	DATE	DESCRIPTION
2	4/2016	ASBESTOS REMOVAL NOTES
1	3/2016	ASBESTOS REMOVAL NOTES
REVISIONS		

LU
7
S